

# Paint the Town!

*An Artist's Perspective  
on Westford, Massachusetts*



*Laurie G. Miller*

# Paint the Town!

*An Artist's Perspective  
on Westford, Massachusetts*

*Laurie G. Miller*

*Copyright © 2011 Laurie G. Miller*

*All rights reserved.*

*ISBN-10: 146114180X*

*ISBN-13: 978-1461141808*

*Book Preview*

*Book Preview*

*Book Preview*

*Book Preview*

## *Introduction*

*I moved to Westford, Massachusetts in 1988 and was captivated by this beautiful town with quintessential New England charm. Years later, as an artist, I simply wanted to capture the antique buildings, the historic mills, the shops and all the places that make Westford unique.*

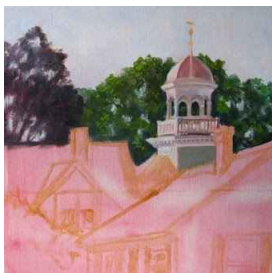
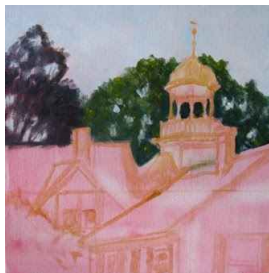
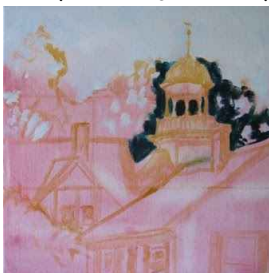
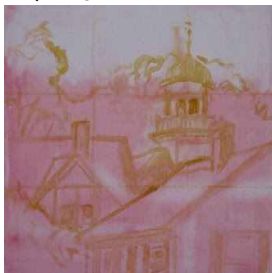
*This little book is a compilation of paintings that I created over the past few years. Each work is inspired by either the structure itself, which may hold a cherished memory, or, a particular color or play of light which caught my eye. I hope you enjoy viewing these paintings as much as I enjoyed creating them.*

*Laurie G. Miller  
July 2011*

*Boston Road Rooftops* – 12 x 12 inches – oil on canvas

*This view welcomes me as I get off the highway and head up Boston Road to the center of Westford. Whenever I see the Museum's cupola, I know I'm almost home.*

*A progression of how the painting developed:*



*Book Preview*

*Book Preview*

*Book Preview*

*Book Preview*



*Book Preview*

*Book Preview*

*Book Preview*

*Book Preview*

*Westford Museum – 12 x 12 inches – oil on canvas*

*The Westford Museum was originally built in 1794 and was home to Westford Academy through 1897. This two story structure sits just off the Westford common on Boston Road.*

*Every winter, the Westford Historical Society pulls this antique sled out of storage and sets it up with garland and a bright red bow.*

*Take note of how the bits of red flow throughout the painting from the cupola, to the chimney, to the ribbon and finally to the front door.*



*Book Preview*

*Book Preview*

*Book Preview*

*Book Preview*

**C. G. Sargent & Sons** – 12 x 12 inches – oil on canvas

Built in 1877, this historic building is located in the Graniteville section of Westford. It sits next to the Mill Pond and is a great place for artistic inspiration. The overflow from the pond was used as water power to drive the equipment for manufacturing machinery and operating the mills.

I started this painting with a dark blue ground and used it to create the texture in the building by allowing the blue to shine through. Some paintings just paint themselves. It doesn't happen often, but when it does, it's pure joy. Somehow, with this painting, my brush knew exactly what to do. It is definitely one of my favorites.



*Book Preview*

*Book Preview*

*Book Preview*

*Book Preview*

*Graniteville Foundry – 12 x 12 inches – oil on canvas*

*I can easily find beauty in an industrial area that might contain dilapidated buildings, rusty machines and other assorted goodies.*

*I was initially inspired by the light green building that contrasts with the tall red tower. This painting is really all about the shapes created by the awning, the stairs, the pipes and all the other elements.*

*Book Preview*

*Book Preview*

*Book Preview*

*Book Preview*



*Book Preview*

*Book Preview*

*Book Preview*

*Book Preview*

## *Westford House of Pizza – 12 x 12 inches – oil on canvas*

*Located in a strip mall on Main Street, Westford House of Pizza, also known as simply “House” or “WHOP” is the perennial gathering place for high school kids in town. Established in 1972, WHOP is still owned by the same family serving the same homemade recipes for nearly 40 years.*

*The challenge in this painting was the windows. They not only reflect items in the parking lot but also allow a partial view inside the restaurant.*



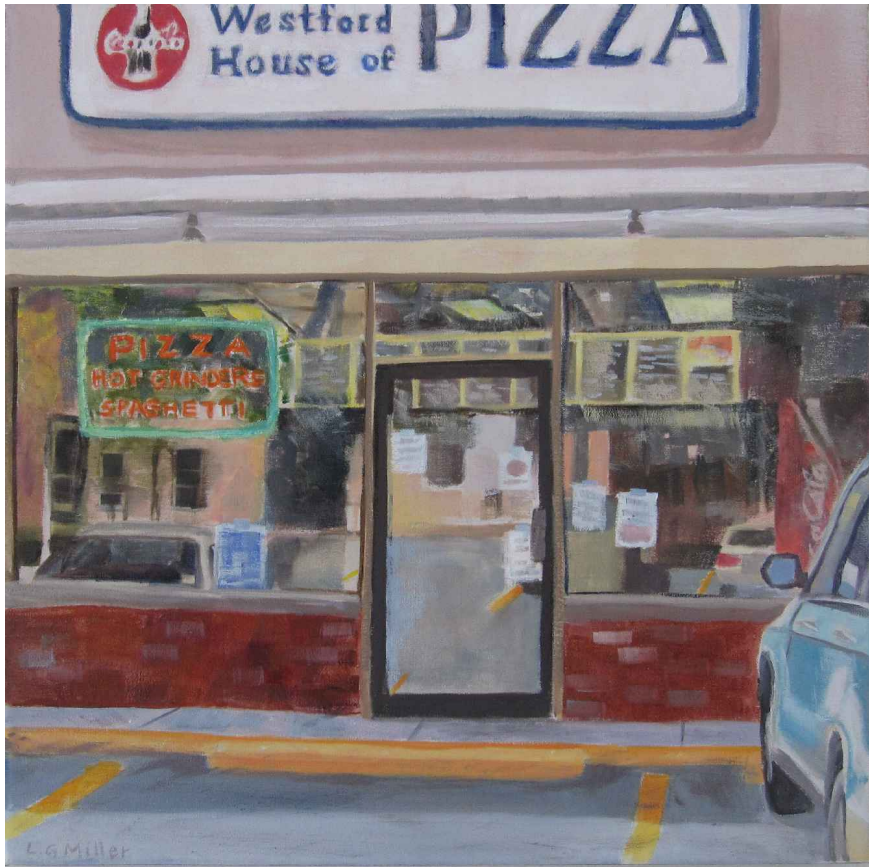
*Pizzeria Presti is located in Forge Village. Tucked along the railroad tracks and wedged into the curve of the street, it made for an interesting subject to paint.*

*Book Preview*

*Book Preview*

*Book Preview*

*Book Preview*



*Book Preview*

*Book Preview*

*Book Preview*

*Book Preview*

## *Parkerville Schoolhouse - 12 x 12 inches - oil on canvas*

*This charming one-room schoolhouse was built in 1880 a few years after the original burned down. Each year, the third grade classes in town make a special field trip to the Parkerville Schoolhouse to learn, firsthand, what life was like before modern conveniences like plumbing and electricity. The kids even dress in period clothing: the girls in long dresses and bonnets, and the boys wearing caps and suspenders.*



*This is how the painting looked in the very early stages. I outlined the shapes and shaded in some of the darkest areas in purple.*



*Book Preview*

*Book Preview*

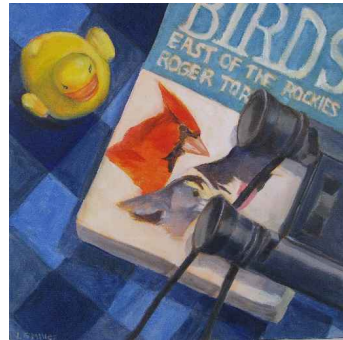
*Book Preview*

*Book Preview*

## ABOUT THE ARTIST

Laurie G. Miller's paintings have been described as "quirky" and "whimsical" and will bring a smile to your face. She has the ability to capture everyday, mundane objects and scenes and shows their inherent beauty through strong reflections, colorful shadows and bold use of color. After painting in watercolors for nearly 20 years, in 2008, she switched to oils and immediately fell in love with the medium.

Her paintings are available at  
Art on Main  
40 Main Street, Westford, MA  
as well as online at  
[www.LaurieGMiller.com](http://www.LaurieGMiller.com)



"Just Ducky"

Contact the Artist at [LaurieGMiller@gmail.com](mailto:LaurieGMiller@gmail.com)  
for pet or house portrait commissions.



[www.LaurieGMiller.com](http://www.LaurieGMiller.com)